

Welcome to Wells & Mendip Museum's newsletter with information about exhibitions, talks, events and developments at the Museum. If you would like to receive a copy by e-mail please contact admin@wellsmuseum.org.uk

Opening hours: Monday – Saturday 10am – 4pm. Closed Sundays.

SMALL ART EXHIBITIONS IN MEETING ROOM

The Museum's Meeting Room has been hosting a regularly changing programme of Art exhibitions since the summer of 2016, during which many individuals, and some groups, have embraced this novel opportunity to see a body of their own work displayed in a public space, overlooking the Cathedral Green.

Showing work here is an attractive proposition, there being no charge to take part. Requirements are that all work must be able to use the hanging system in situ, and available for purchase, at which time all transactions will be handled by the Museum Shop, with 30% of the selling price directed toward the running of the Museum.

The Museum would like to encourage more people to take part in the programme, so if you are making something that can be displayed on a wall, why not get in touch.

"ART OF ELOQUENCE" - AN EXHIBITION BY DEBBIE RICHARDS 4 NOVEMBER – 20 JANUARY

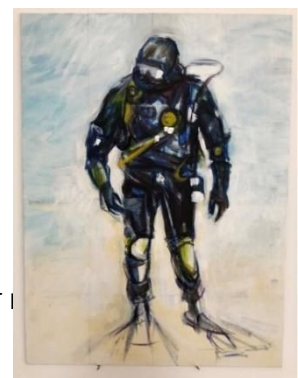


An eclectic exhibition of fine art framed and canvas prints all available to purchase. Deborah Richards is a Photographer that specialises in capturing thought provoking images and limited edition works, covering a range of subjects that are 'life'. From Landscapes and Vintage subjects to Abstracts these are framed prints that will enhance your walls and inspire for many years to come.

Using new and vintage frames as well as contemporary canvases the exhibition will offer a variety of options to suit all.

"COMMON GROUND" – AN EXHIBITION OF DRAWINGS, PAINTINGS AND PRINTS BY ROBIN GRAY & CERIS JONES 23 NOVEMBER – 14 DECEMBER

The Somerset artist, Robin Gray, met Preston artist Ceris Jones at the annual cavers conference, Hidden Earth, over twenty years ago. The two artists were both showing drawings and paintings of caves, cavers and cave exploration. Discovering that there were others interested in this unusual subject they became founder-members of ISSA, the International Society for Spelaeological Art. Since then their work relating to caves and caving has spread to most parts of the



world where cave exploration is carried out and they have become highly collected by cave enthusiasts. It is exciting that this joint exhibition is to be held in the Wells Museum, a museum set up by Herbert Balch, a pioneer British cave explorer. In addition to work relating to caving the two artists found that they both worked on subjects relating to mountains, diving, and their own local landscapes and both taught life drawing, so because of this shared common ground, their exhibition is titled Common Ground.

Here you will find new works relating to all their interests, in the form of drawings in graphite, ink and mixed media, paintings, artist's prints and of course life drawings. A genuine feast for every eye!

CHRISTMAS CRAFT MARKET

SATURDAY 23 NOVEMBER 10am – 4pm



Our festive craft market will be full of festive charm. Get ahead with your Christmas shopping and browse handmade gifts, crafts and stocking fillers. All stallholders are local artisans, including a blacksmith, a woodturner, handmade Christmas wreaths & decorations, pebble craft & wire work, jewellery, cards, bags and artwork, cakes and sweets, plus lots more There will also be refreshments available and a Christmas raffle. **Free entry to market.**

NEWS FROM THE CITY ARCHIVES

The wonderful "Mills of Wells" exhibition opened to the public at Wells Museum on Thursday 24th October, after a very successful preview the previous evening. The exhibition was originally prepared by the Wells Mills Interest Group (in collaboration with Wells City Archives) for Heritage Open Day at Wells Town Hall in 2018. The Museum is very fortunate to be hosting an updated and extended version of the display until Saturday 16th November. It tells the stories of all the mills there have been in Wells over the years along the St Andre's Stream. This time there are also vintage photos of some of the people who ran one of the mills, as Mrs Je



generously loaned portraits of Alfred and Richard Sheldon. If you haven't seen the exhibition yet, don't miss it! And do buy a copy of the fantastic booklet the Mills Interest Group have just produced, also entitled "The Mills of Wells", and published by the Museum. It's on sale in the Museum shop and is a bargain at a cost of only £5 a copy.

LIBRARY NEWS

Eric Preston's booklet "The Changing Shops of Wells", with its "then and now" photographs, remains on sale at the Museum Shop (£9.50).

WINTER EXHIBITION FROM 4 NOVEMBER - The Library holds a stock of historic newspapers – approx. 50 unbound copies of local and provincial newspapers – mainly the *Wells Journal*. Beyond the local press, the Library holds national newspapers in the following categories: General and Commemorative, World War 2, Royalty, and copies of the *Illustrated London News*. Inventories of both local and national *unbound* newspapers

can be consulted in the Library – though many of the titles must be brought from the Attic stack.

Our **Winter Exhibition** draws mainly on the local press, and pursues, in particular, the perennial interests of sport, societies and clubs together with the changes in travel habits, including the role of holiday travel companies like the then trailblazing Thomas Cook. (Bound copies of the *Wells Journal* for the years 1890-1901, 1957-1980 and 1999 are held in the Museum Archives, together with random copies of regional newspapers of earlier date).

Farewell

Janet Golding (Family History Group) retires from Library duty at Christmas after 10 years of coming in by bus from Street. She has our warmest thanks for her past loyalty and our best wishes for the future.

FINDS IDENTIFICATION DAY

Thursday 12 DECEMBER 11am – 3pm

Laura Burnett, the Finds Liaison Officer for Somerset County Council, will be available to identify your finds from digging your garden or while walking your dog.

No charge or booking necessary

VOLUNTEERING OPPORTUNITY

We currently have a vacancy on Saturday afternoons for a Front of House Volunteer. Our Front of House Volunteers co-ordinate the smooth running of the reception area in the Museum by extending a warm and informative welcome to all visitors. This is a key role and our Front of House Volunteers must be happy working in a busy and varied customer-orientated environment. This role will suit someone who is computer literate, has an enthusiastic and friendly manner, enjoys meeting people and is happy to work as part of a team.

If you, a family member or friend is interested in applying for the role, please

contact: Janet Rodger, Volunteer Co-ordinator

email: volcoordwmm@gmail.com or Telephone: 01749 674827"

UPDATE ON FUNDRAISING PROJECTS

"Save Our Swan", which was first launched at the end of in 2017 to raise money for the conservation of our Palace Moat swan display, continues, and will play an important part in our planning for the new Wells City gallery.

We are still fundraising to restore some of our precious samplers.

If you would like to donate to either project, or would like more information, please contact the museum.

OTHER EVENTS AT THE MUSEUM

Wednesday 13th November at 7.30pm – AGM followed by "Stories of Stage & Screen" a talk by Andrew Fawcett and Richard Green. Visitor are most welcome and asked to make a £2.00 contribution

Well Civic Society

Wednesday 20th November at 7pm "Rivers" by Chaz Powell. Chaz discusses the beginning of his wildest journey and the mission to walk Africa's rivers in the battle against wildlife crime. From £4.00 per person RGS-IBG members free

BOOK via Eventbrite Contact Jacki Hill-Murphy with enquiries on wesw@rgs.org

The Royal Geographical Society

Tuesday 26th November at 7.30pm – “Coastal Plants of Somerset” Helena Crouch is plant recorder for the north part of Somerset on behalf of the Botanical Society of Britain and Ireland and will be taking us on a virtual walk around Brean Down to see what specimens can be found there. Members £3.00, Non Members £3.50
Somerset Wildlife Trust

Friday 6th December at 7.30pm – “Noble Instrument or ‘Cuckoo Pipes’?” – The Church Organ and Church Music in Early Modern Somerset 1500 – 1800 by Dominic Gwynn. Please join us at the meeting for a glass of mulled wine and mince pies. Free for members, Visitors £2.00
Wells Natural History & Archaeological Society

Wednesday 11th December at 7.30pm – A Seasonal Celebration with the presentation of the BA5 awards for contribution to the community of Wells, plus the further exploits of Gert and Daisy (and little Betsy)
Visitors are most welcome and asked to make a £2.00 contribution
Wells Civic Society

Saturday 14 December 11am – 4pm Come and have a wander around the “**Pop-up Art Fair**”, hosted by the **Old Bakery Artists**. **Free Entry to event only.**



CHRISTMAS CLOSING DATES

The Museum and Tourist Information will close at 4pm on Saturday 21 December and will re-open at 10am on Thursday 2nd January

We would like to take this opportunity to thank all our wonderful volunteers for their constant hard work, our exhibitors, visitors and friends for their invaluable support, and to wish everyone a very merry Christmas and a happy and peaceful New Year.

 #wells.museum  @wellsmuseum

 [facebook.com/wellsandmendipmuseum](https://www.facebook.com/wellsandmendipmuseum)

Data protection and email addresses. If you have received this newsletter by email we clearly hold your email address. If you do not wish to receive information in this way, please unsubscribe using the link included in the email

If you receive this newsletter by post and no longer wish to do so, please contact the Museum Manager on 01749 673477 or admin@wellsmuseum.org.uk